



# Crystals in the Eye

**Vinit Shah\***; Syed Mohideen Abdul Khadar; Shobita Nair

Retina & Vitreous, Aravind Eye Hospital, S N High Road Tirunelveli Junction, Tirunelveli 627001, Tamilnadu, India.

**\*Corresponding Author: Vinit Shah**

Retina & Vitreous, Aravind Eye Hospital, S N High Road Tirunelveli Junction, Tirunelveli 627001, Tamilnadu, India.

Tel: +7502404780, Fax: + 04624356100;

Email: drvjshah@gmail.com

Received: Aug 01, 2020

Accepted: Sep 16, 2020

Published Online: Sep 18, 2020

Journal: Annals of Ophthalmology and Visual Sciences

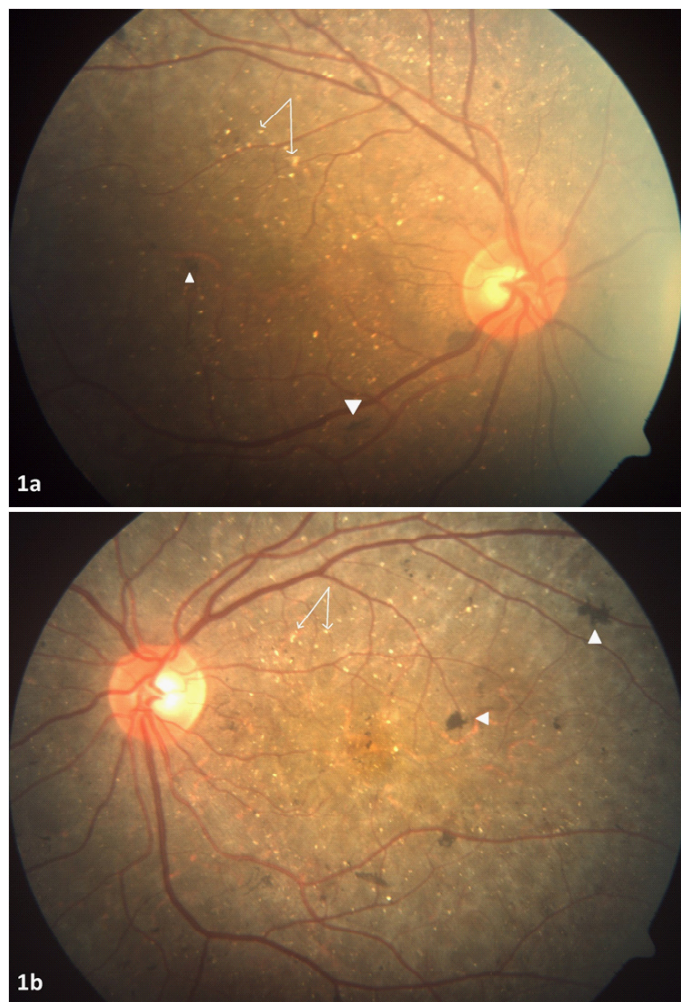
Publisher: MedDocs Publishers LLC

Online edition: <http://meddocsonline.org/>

Copyright: © Shah V (2020). This Article is distributed under the terms of Creative Commons Attribution 4.0 International License

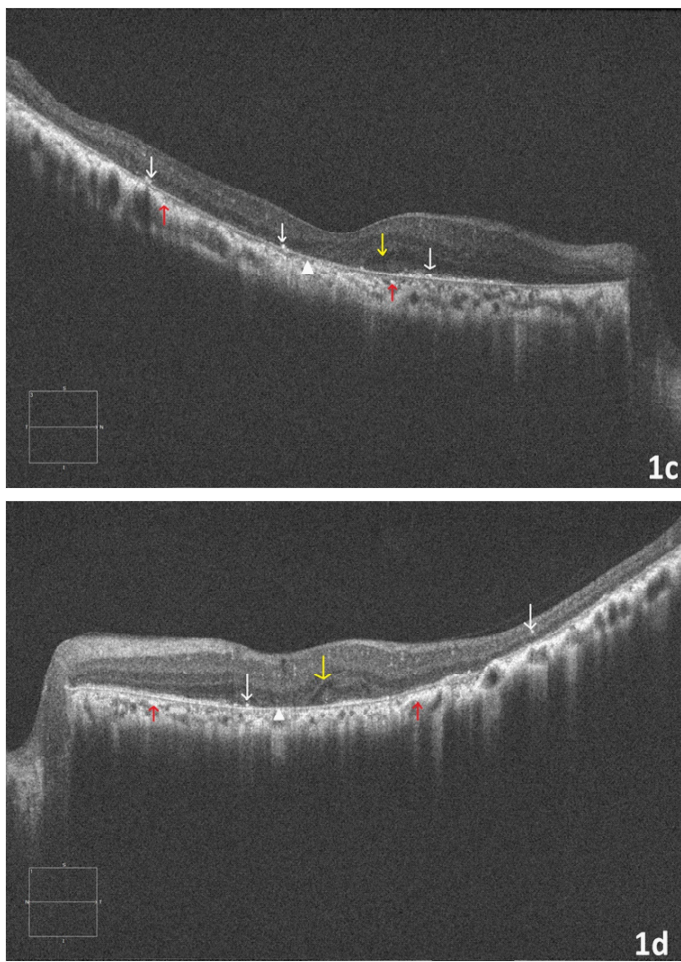
## Clinical image description

A 48 years old female presented to us with defective vision in both the eyes since 1 year. Her BCVA in RE was 6/18 and in LE 6/9. Both eyes anterior segment examination was within normal limits and posterior segment showed glistening, yellow-white intraretinal crystals in the posterior pole, atrophy of the retinal pigment epithelium & choroidal sclerosis (Figure 1a & 1b). Both eyes SD-OCT showed outer retinal tubulations, bright reflective spots on top of RPE-Bruch membrane complex and choroidal hyper reflective spots (Figure 1c & 1d). All the fundus findings were classical and SD-OCT findings were also suggestive of Bietti's crystalline retinal dystrophy.



**Figure 1a & b:** Fundus photograph OU Yellow- white crystalline deposit (white arrow), RPE atrophy and choroidal sclerosis (arrow head).





**Figure 1c & d:** SD-OCT of both eyes shows bright reflective spots overlying RPE-Bruchs Complex (white arrow), RPE Atrophy (Arrow head), choroidal hyper reflective spots (red arrow) and early retinal tubulations (yellow arrow).